

TEEDA

HOTEL
&
RESIDENCE
COMPLEX



TEEDA



TEEDA

THE INITIAL STATE OF THE SITE



Address:Lakan st, Rasht, Gilan Province, Iran



TEEDA COMPLEX





TOWER RESIDENCE

RASHT, CITY OF SILVER RAINS



Rasht is the largest city along the Caspian Sea's coast. Nestled between the sea and the mountains, the local climate is rainy with humid summers. It also has temperate forests to its south, contrasting the mostly arid parts of Iran. It is a major trade center between the Caucasus, Russia, and Iran through the port of Bandar-e Anzali. Rasht is also a major tourist center with the village of Masouleh in the adjacent mountains and the beaches of the Caspian Sea as some of its major attractions.

People of Rasht indulge in arts, food, and clothes. They spend their leisure time going to cinemas, art exhibitions, concerts, and international book fairs that are held in the city several times during the year.

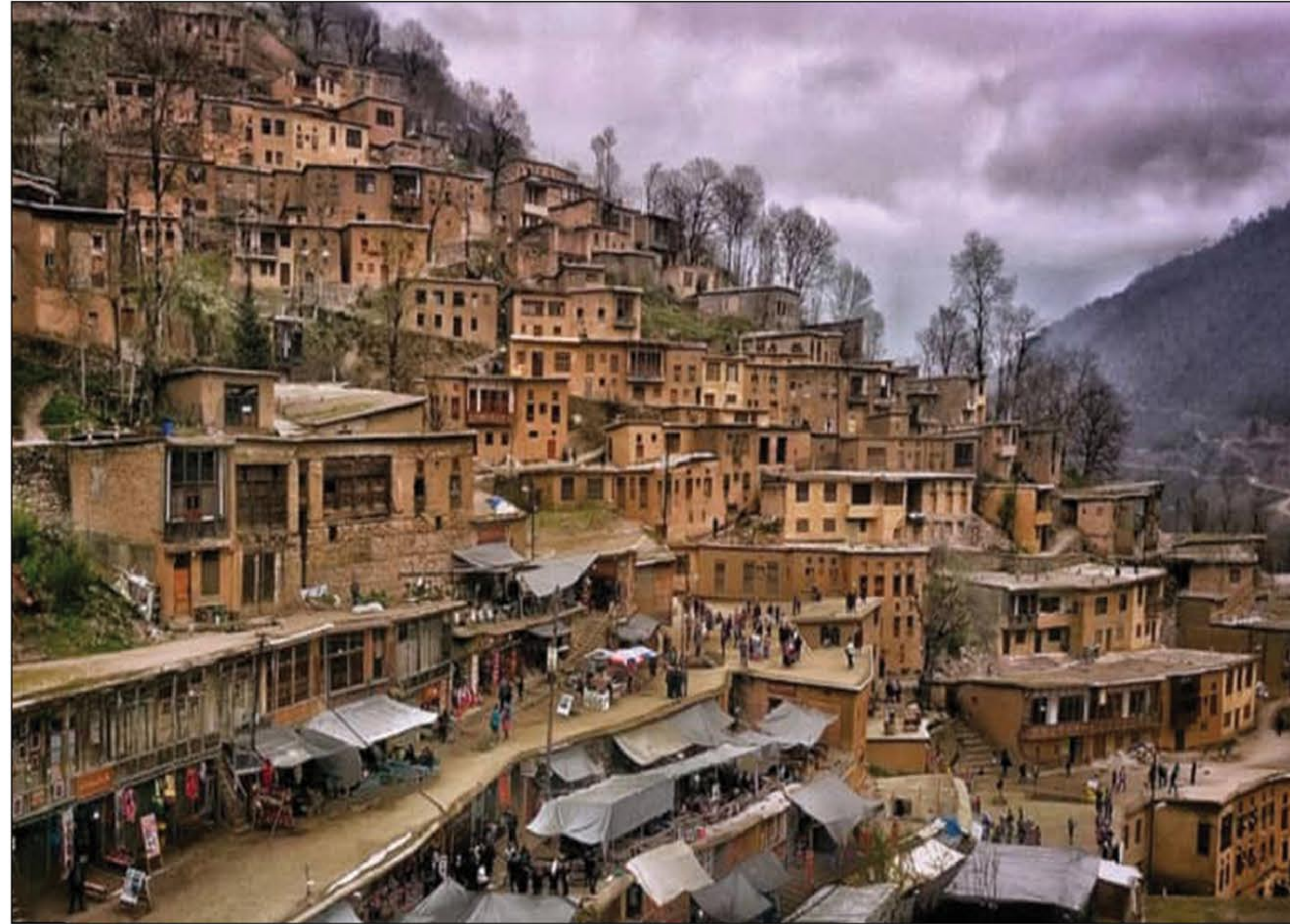


Gilan, A Beautiful and Green Province in Iran

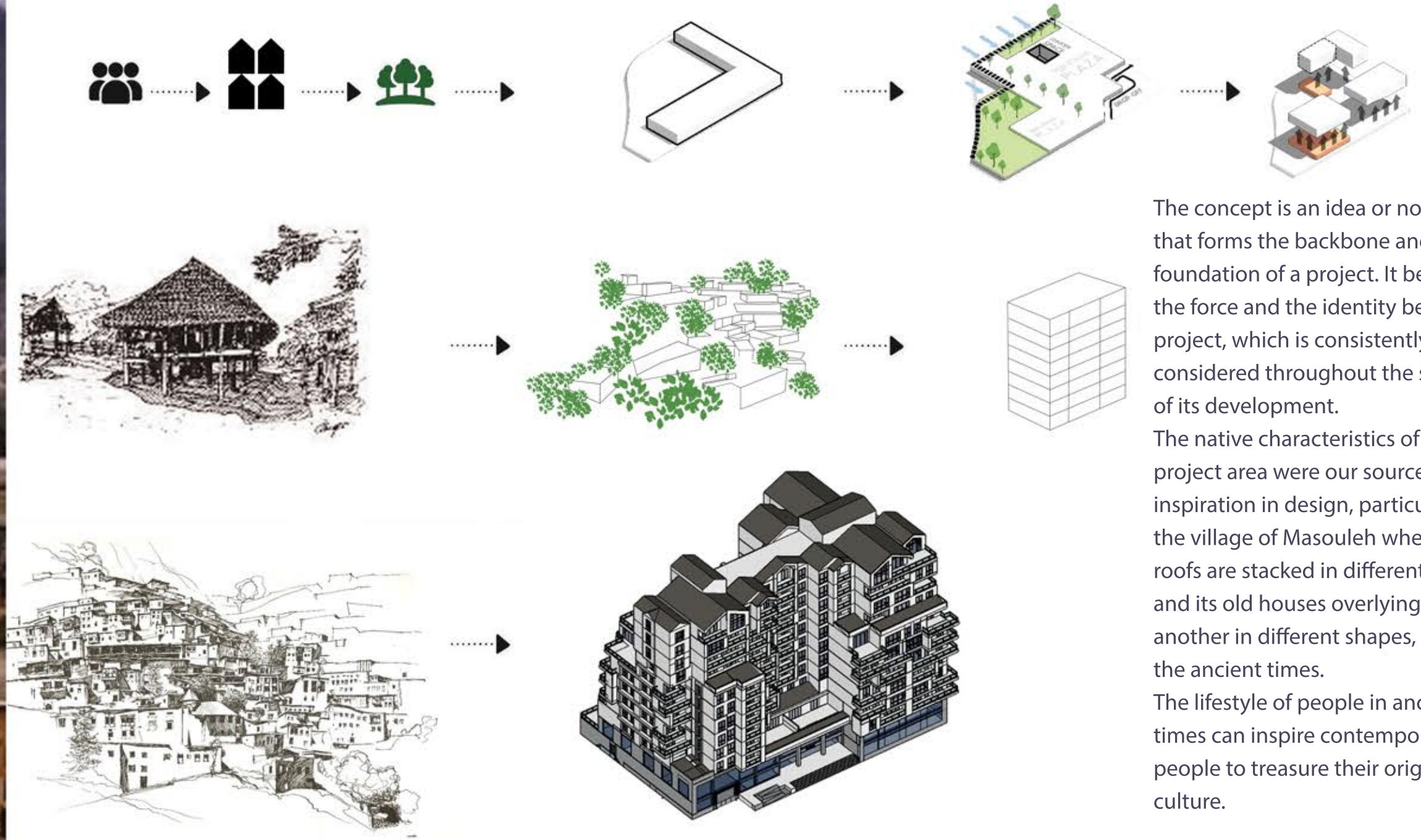


Gilaks are very kind and hospitable, known for their cordial and artistic temperament. This is such a dominant characteristic among them that many of the highly regarded figures of the art of Iran have emerged from this region. These people are very extrovert to the extent that this quality is discernable in their architectural style and culture, in general.





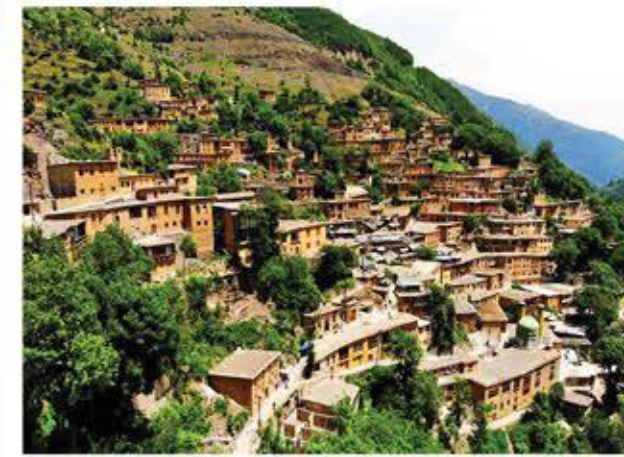
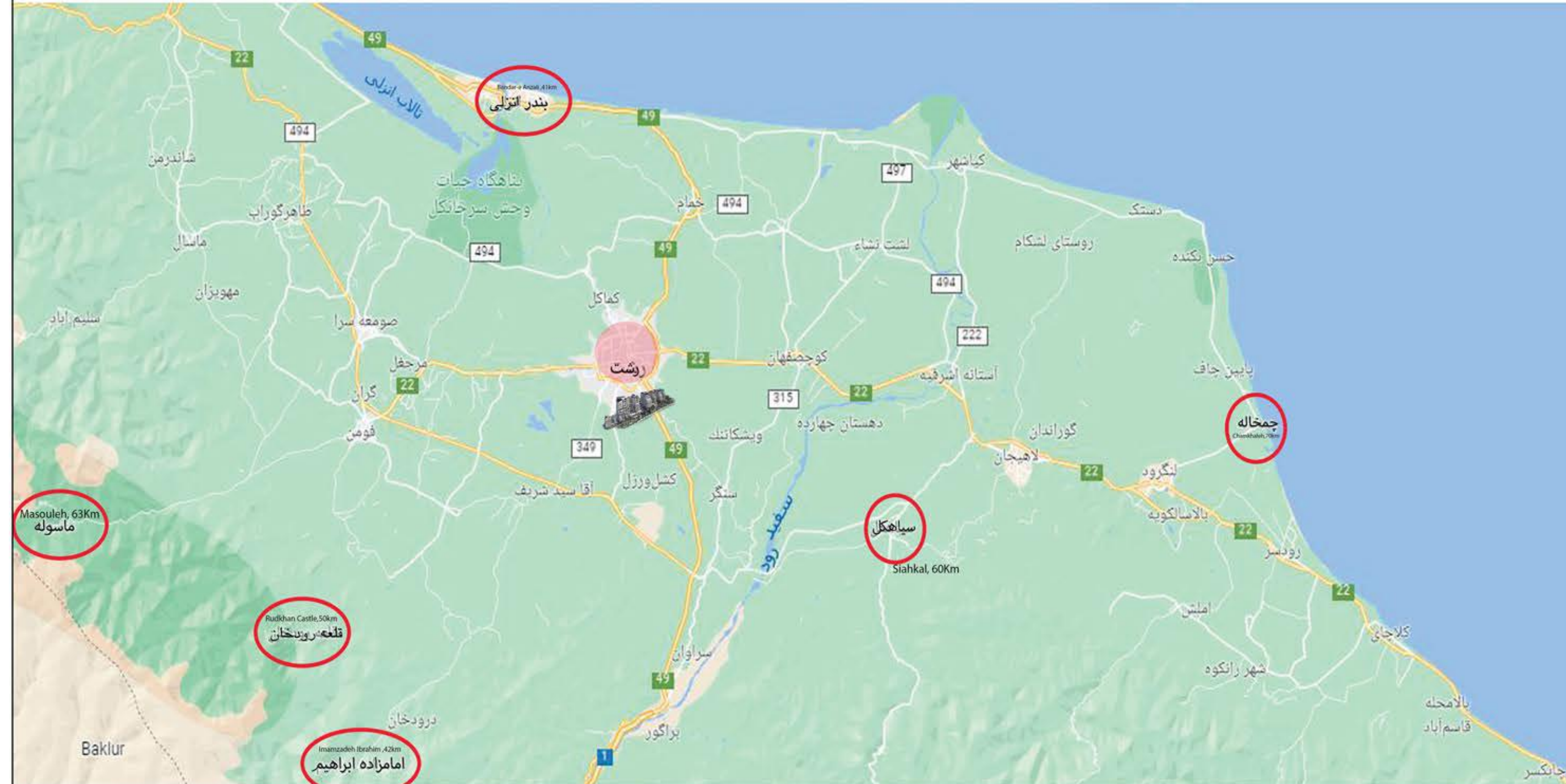
CONCEPT OF TEEDA PROJECT



The concept is an idea or notion that forms the backbone and foundation of a project. It becomes the force and the identity behind a project, which is consistently considered throughout the stages of its development.

The native characteristics of the project area were our sources of inspiration in design, particularly the village of Masouleh where the roofs are stacked in different forms, and its old houses overlying one another in different shapes, since the ancient times.

The lifestyle of people in ancient times can inspire contemporary people to treasure their original culture.



Masouleh, 63km



Imamzadeh Ibrahim , 42km



Chamkhaleh, 70km



Siahkhal, 60km



Bandar-e Anzali ,41km



Saqalksar, 20km



Rudkhan Castle, 50km



TEEDA COMPLEX



Total Area $\approx 55,500 \text{ m}^2$

Hotel Area $\approx 23,000 \text{ m}^2$

Residential Areas $\approx 32,500 \text{ m}^2$

WHY SHOULD YOU CHOOSE TEEDA?



FOR THOSE WHO HAVE GREAT THOUGHTS AND GOALS.



Teeda design objectives are all significantly important:

Accessibility, aesthetics, cost-effectiveness, functionality/operationality, environmental preservation, productivity, security and safety, and sustainability.

The interrelationships of all of these must be understood, evaluated, and appropriately applied to this project to create a compelling complex.

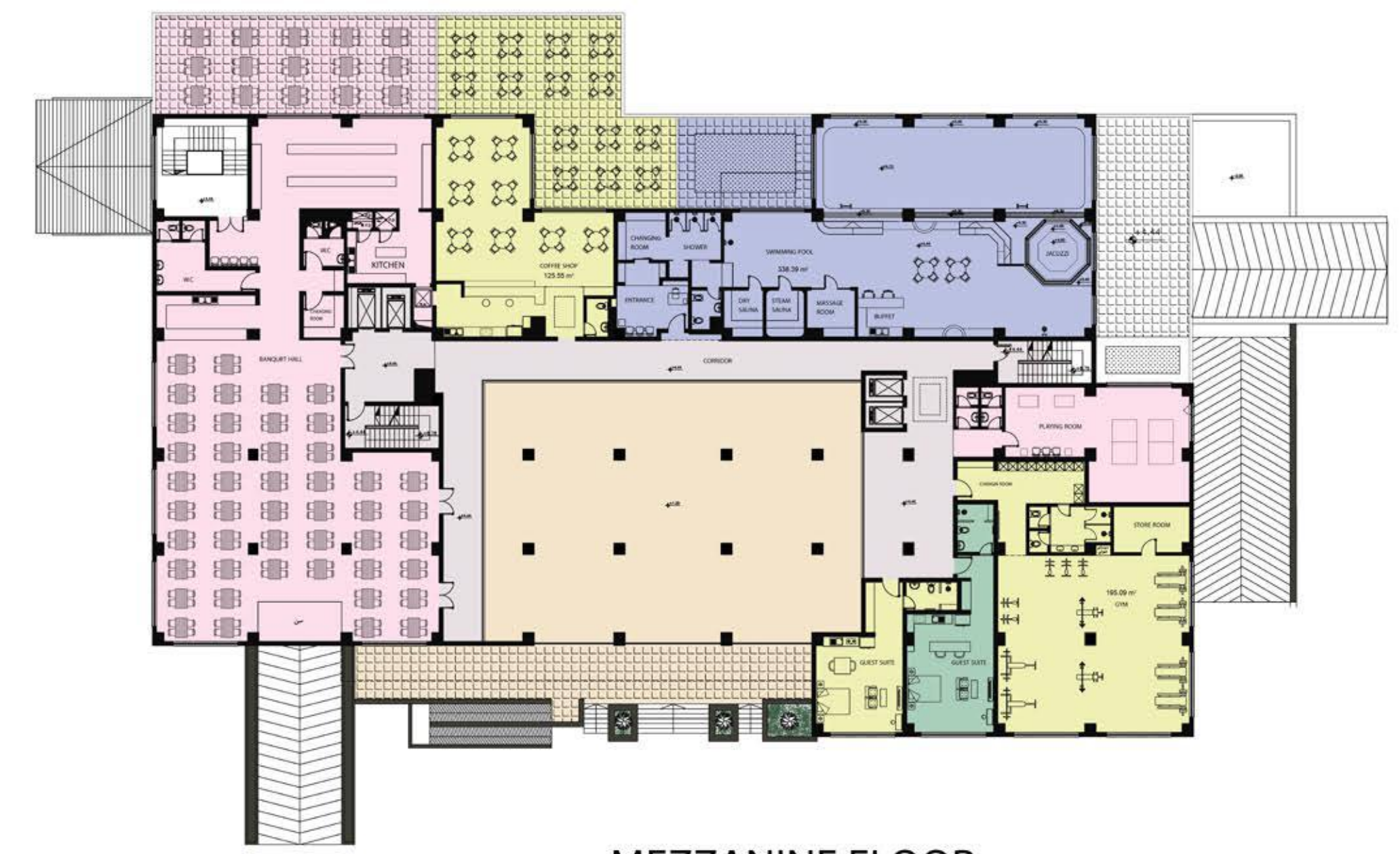


THE INITIAL STATE OF THE SITE

COMMON SPACES



GROUND FLOOR



MEZZANINE FLOOR

We all know the importance of first impressions.



LOBBY DESIGN

Building lobbies often serve as the public face of building interiors and are becoming more interactive spaces that provide an enhanced client experience. From the right lighting scheme to the efficiency of the layout, we are incorporating the essentials of residential lobby design.





LOBBY AND FACADE



Blending in with its urban context or standing out to draw attention, a facade tells a building's story. It is an expressive medium through which we engage with architecture, defining first impressions and setting the tone for the interior and exterior by experimenting with transparency, movement, texture, and color, among other aesthetic possibilities.

Architectural design, therefore, faces an important challenge: to achieve a balance between an attractive look and building performance. At the concept stage, key performance criteria for the building envelope are identified. We, together with the architects develop the facade concepts, taking into consideration target performance, safety and buildability.



LOBBY WITH PRIVATE ENTRANCE



TEEDA RESIDENCE





TEEDA RESIDENTIAL AND TOURIST COMPLEX



SQUASH SALOON

We knew our design had to be connected closely to nature, promoting health, fitness, and well-being.

Recreational facilities play a big role in people's well-being.

They attract people as they offer great pleasure and comfort and develop a strong healthy environment for a better lifestyle.

We included these important facilities in a recreational center that promote both physical and mental health. The top three facilities are a jogging track, a gym, and fun land. Coffee shop, science center, art center and banquet hall are the top facilities included in this complex.



MARTIAL ARTS



This northern province boasts over 170 dishes...

such as Mirza Qasemi (eggplant and egg cooked with a smoky taste), Torshi Tareh(sour herbs stew), Baghali Ghatogh(a stew with beans, garlic, dill, and egg), Fesenjon (walnut stew with pomegranate sauce), Seer Qalieh (a stew with chicken, garlic and eggs), and Kalkabab. Local cuisine has a direct link with geography. In the north, most dishes are green due to their verdant environment. Food is abundant due to Gilan's favorable climate, and its lush and fertile farmland. One could see people working in paddy fields, farmlands, and pastures. Gilan has over 100 herbal dishes that appeal to the taste-buds of foreign visitors.

ART CENTER



The Art center is a place where people can go to express their feelings, ideas, and be creative! Every child is an artist in the Art center. It is a place that promotes high-level thinking and problem-solving. Juveniles can learn and develop skills in all learning domains (language, math, science, social studies, painting, music, and social skills) through art.



INVITATION TO DIFFERENT SPACES...



THE ROLE OF LIGHTING IN SPACES...





TEEDA

MORE ENJOYMENT OF LIFE





How to Decorate Your Home

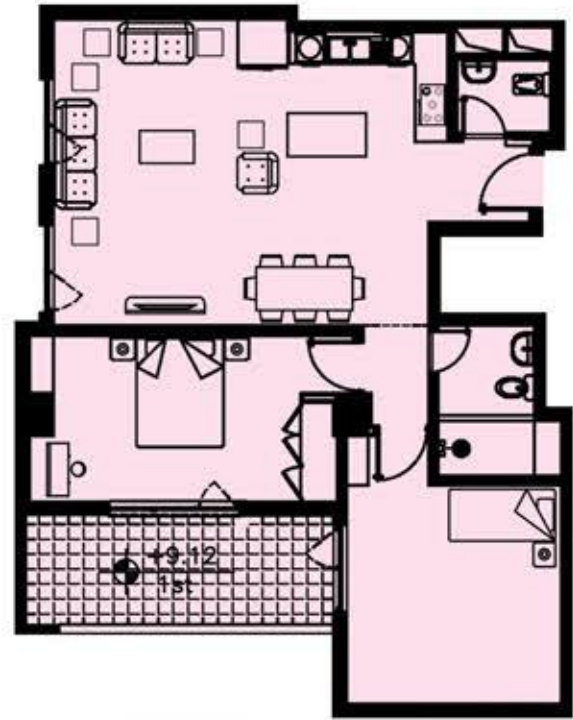
Moving into a new home can be one of life's great joys, but it can also be a time of uncertainty, especially when it comes to decorating. How do you make your space look its best while reflecting your sense of style? Do it well and you'll end up with a comfortable, happy home. Do it poorly and you'll end up with a hodge-podge of furniture, fabrics, and paint colors that never congeal into a pleasing whole. With a little planning, and by following the same steps used by our professional interior designers, you'll have a much greater chance of success.





FIRST FLOOR

C101	185	m2
C102	135	m2
C103	115	m2
C104	145	m2
C105	180	m2
C106	125+15	m2
C107	185	m2
C108	130	m2
C109	230+65	m2
C110	145+50	m2
C111	150	m2
C112	120	m2



C112



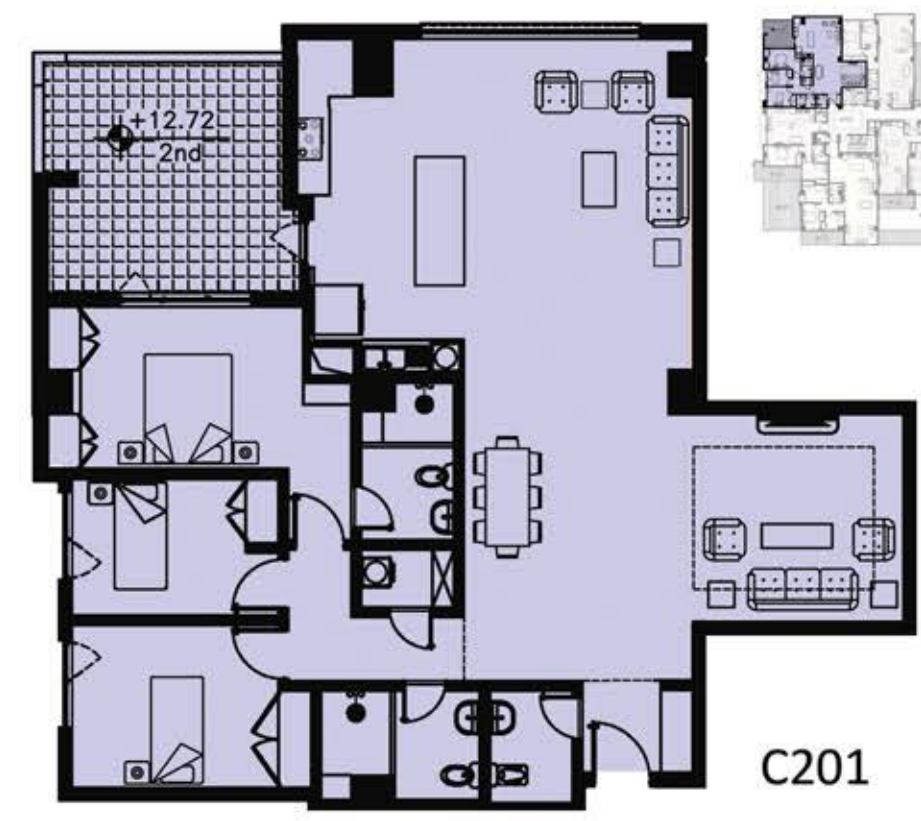
C109



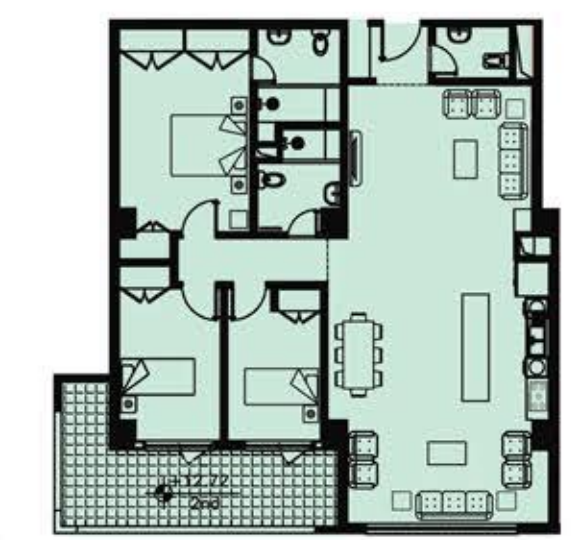


SECOND FLOOR

C201	180+10	m2
C202	135+55	m2
C203	110+50	m2
C204	190	m2
C205	130	m2
C206	170+15	m2
C207	165	m2
C208	140	m2
C209	165	m2
C210	160	m2
C211	115	m2

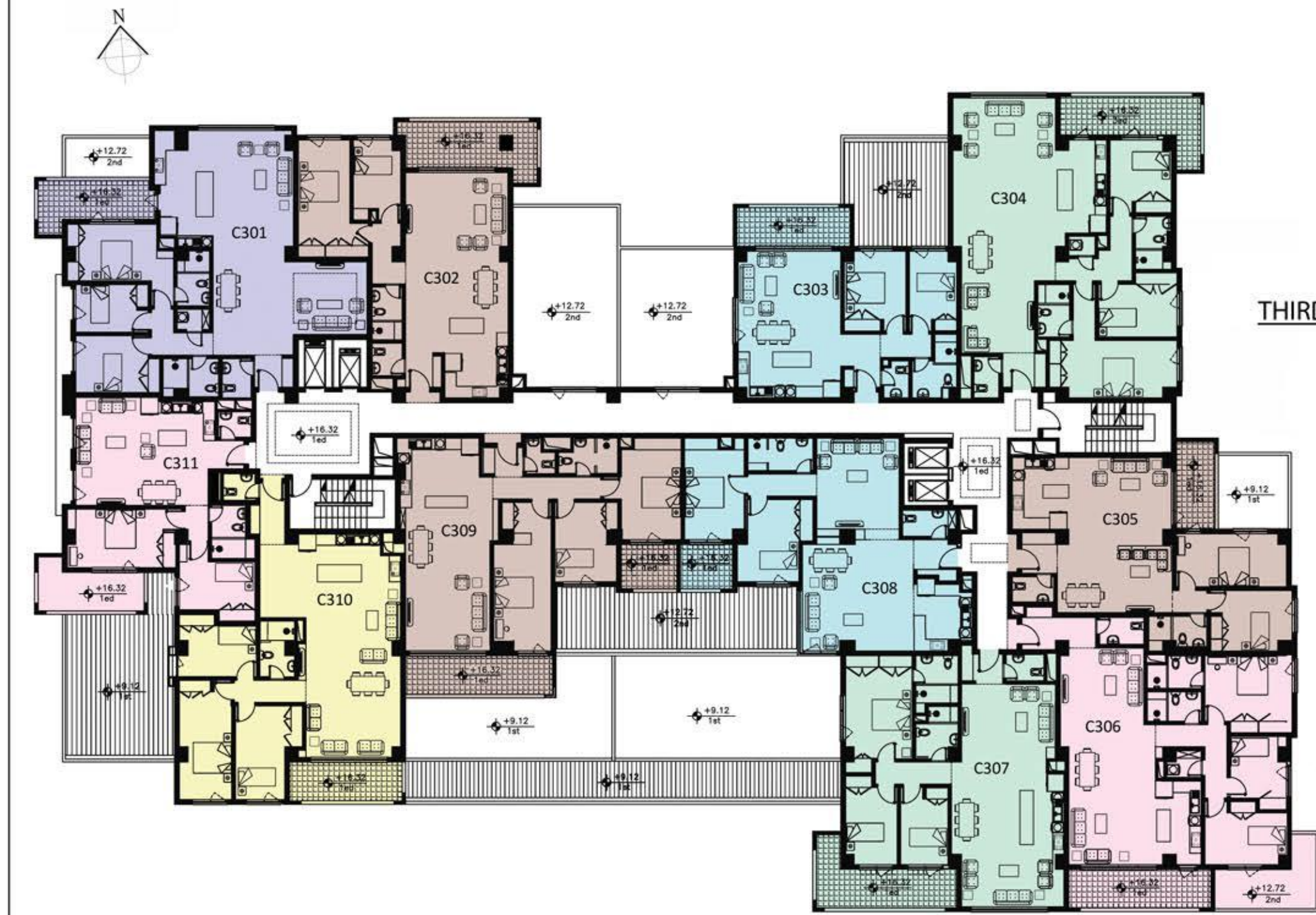


C201



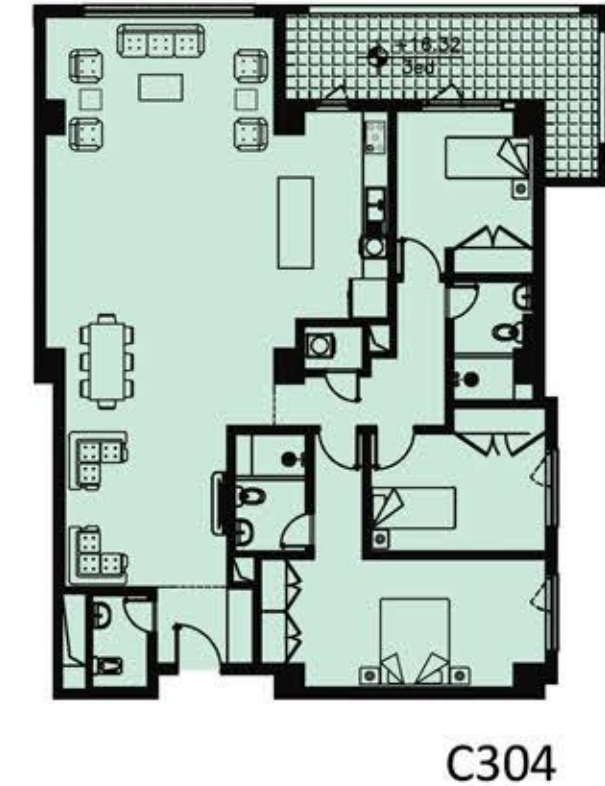
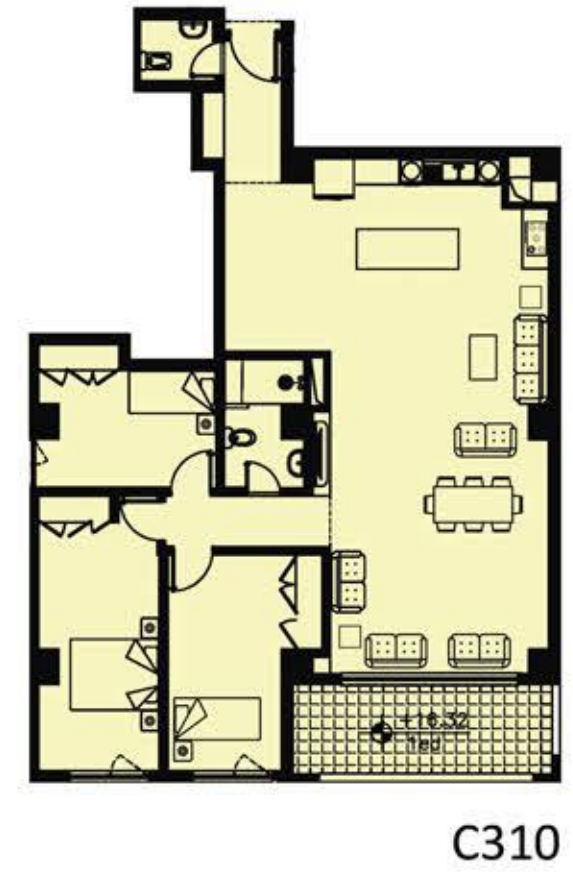
C207





THIRD FLOOR

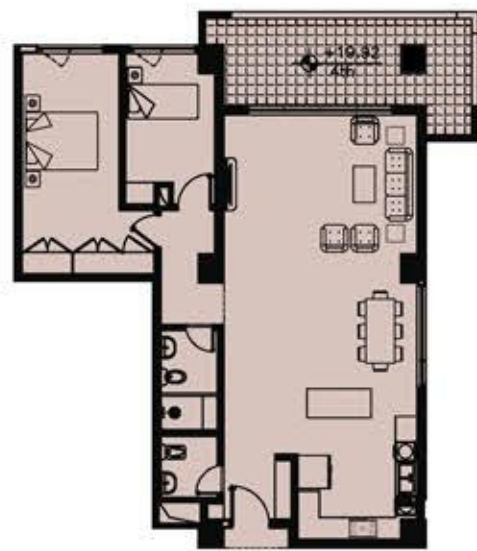
C301	185 m2
C302	140 m2
C303	110 m2
C304	195 m2
C305	130 m2
C306	170 m2
C307	165 m2
C308	140 m2
C309	170 m2
C310	165 m2
C311	115 m2



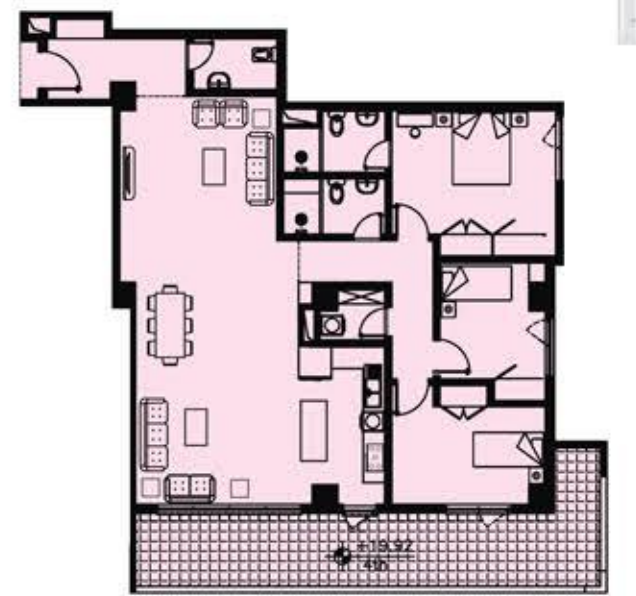


FORTH FLOOR

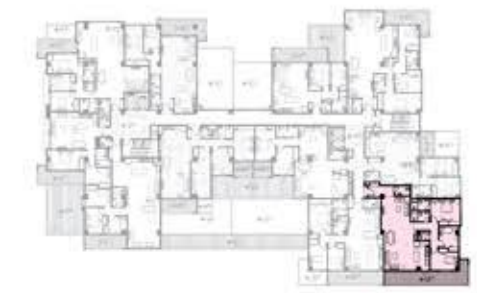
C401	185	m2
C402	140	m2
C403	115	m2
C404	195	m2
C405	125	m2
C406	185	m2
C407	155	m2
C408	145	m2
C409	165	m2
C410	165	m2
C411	115	m2



C402



C406



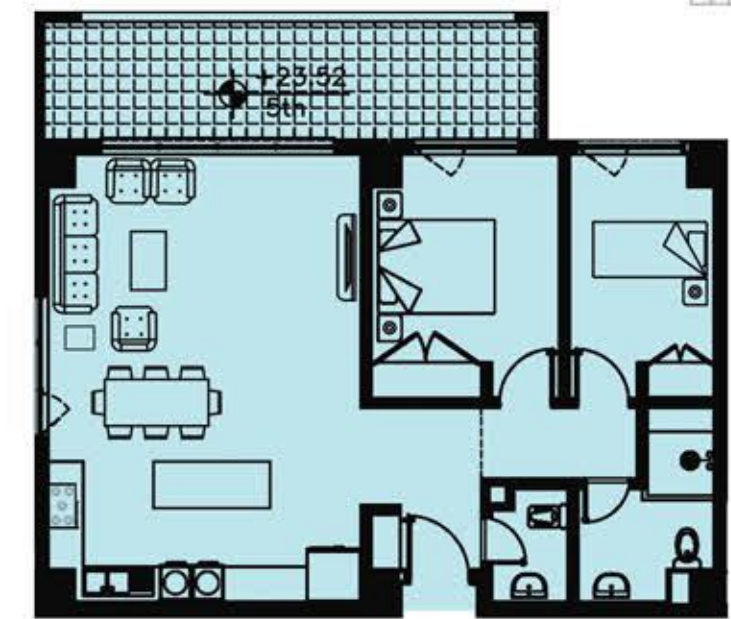


FIFTH FLOOR

C501	180	m2
C502	135+5	m2
C503	120	m2
C504	190+5	m2
C505	125	m2
C506	170	m2
C507	155+15	m2
C508	140	m2
C509	170	m2
C510	165	m2
C511	115	m2

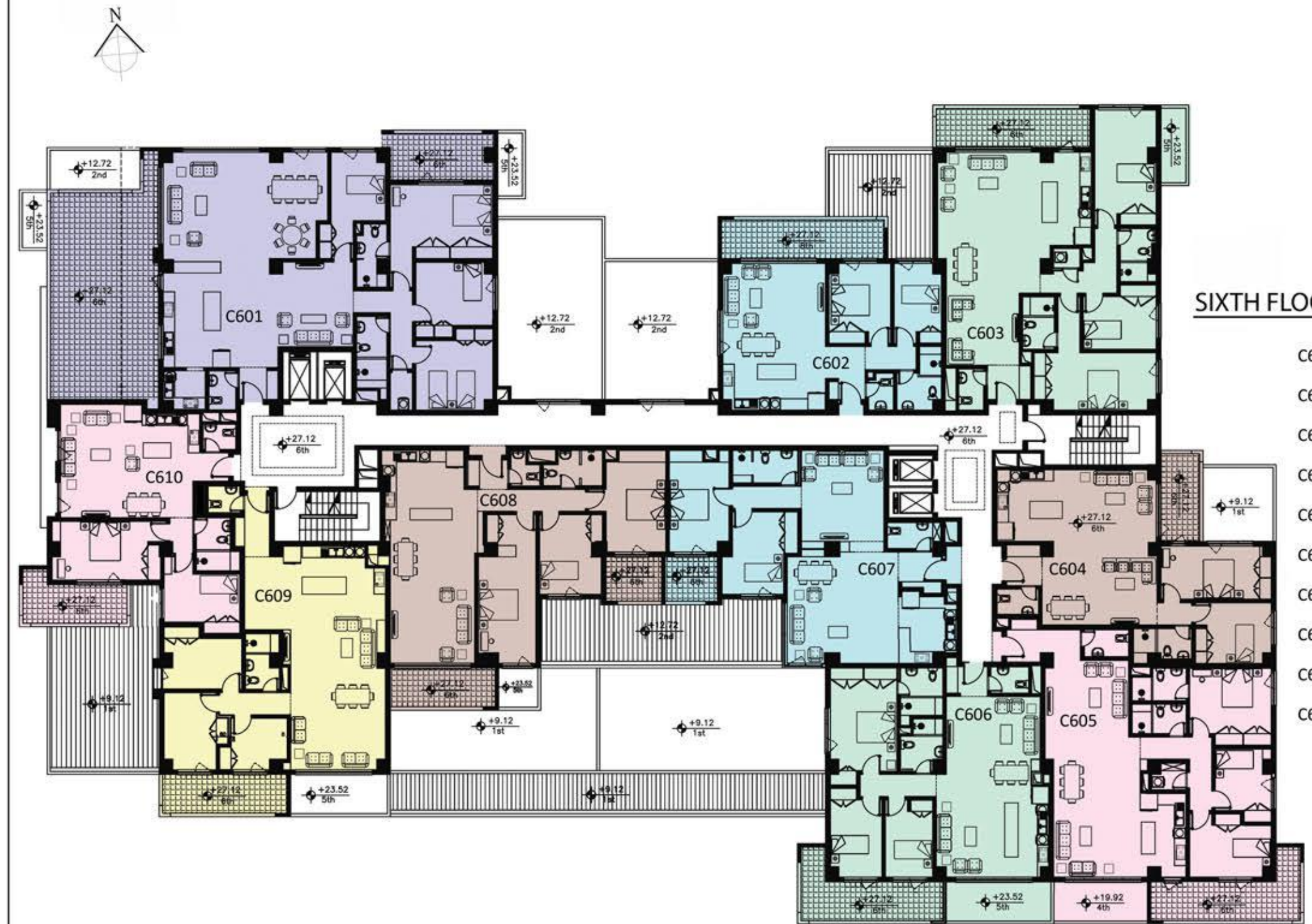


C509



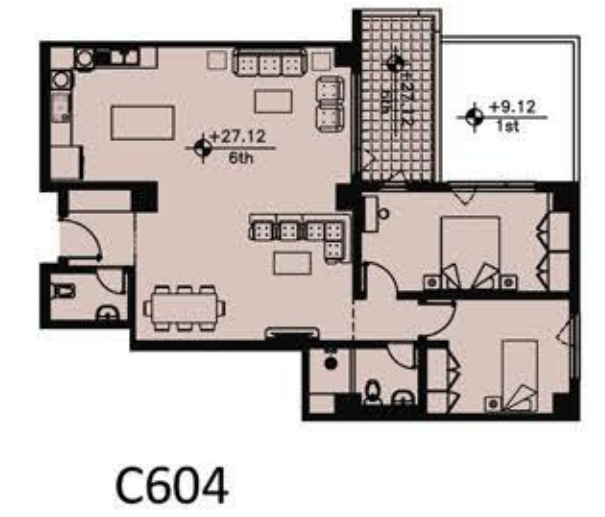
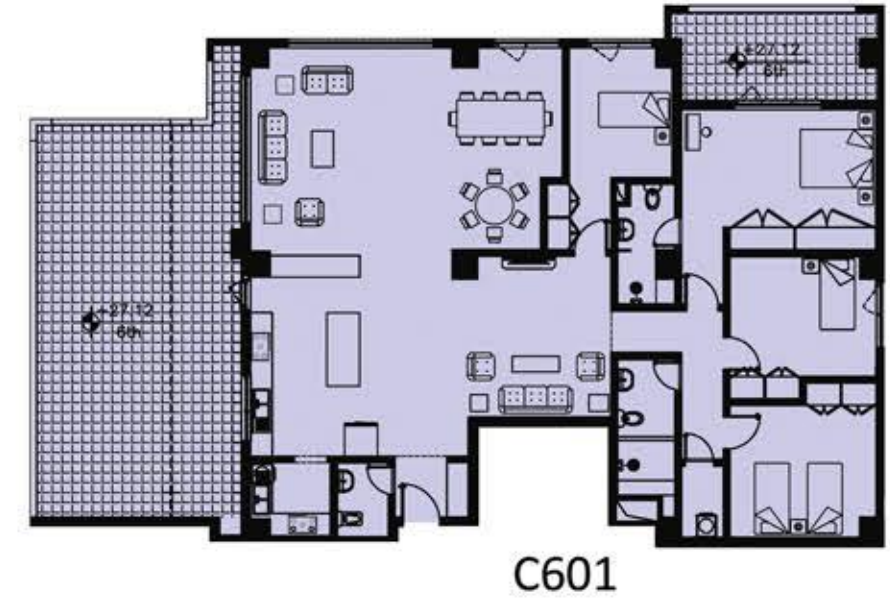
C503

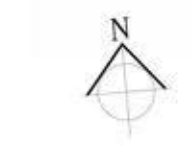




SIXTH FLOOR

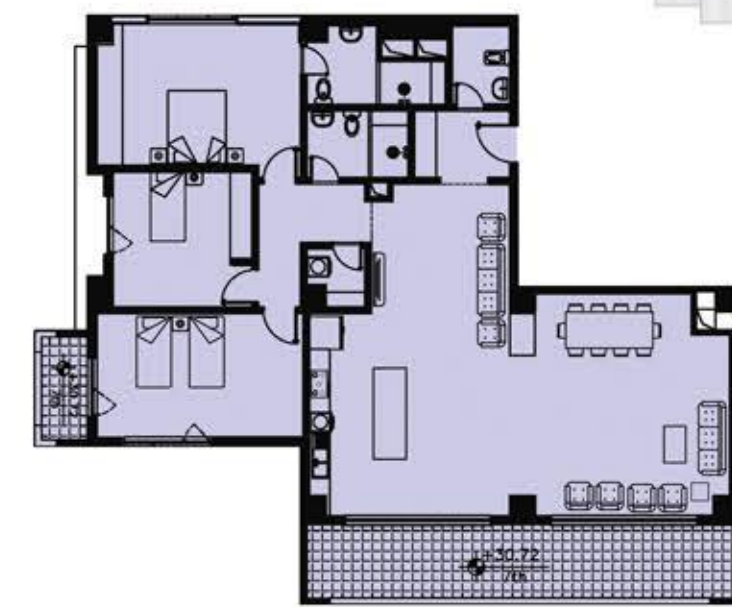
C601	265+45	m2
C602	110+5	m2
C603	175+15	m2
C604	125	m2
C605	155+18	m2
C606	140+20	m2
C607	140	m2
C608	165	m2
C609	155	m2
C610	115	m2





SEVENTH FLOOR

C701	110	m2
C702	185	m2
C703	125	m2
C704	170+20	m2
C705	155+20	m2
C706	165+5	m2
C707	220+5	m2



C707



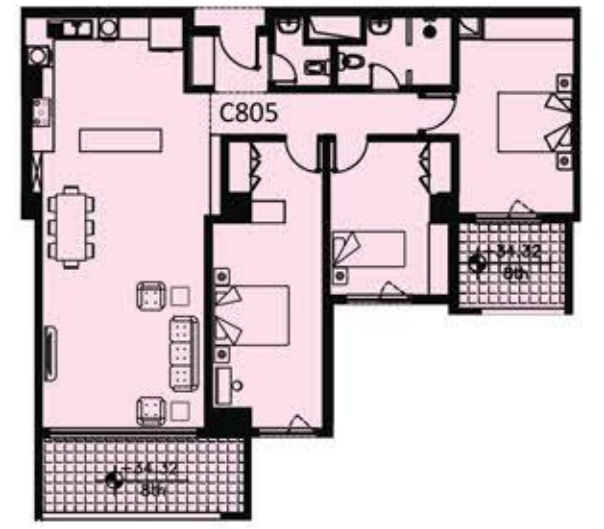
C704



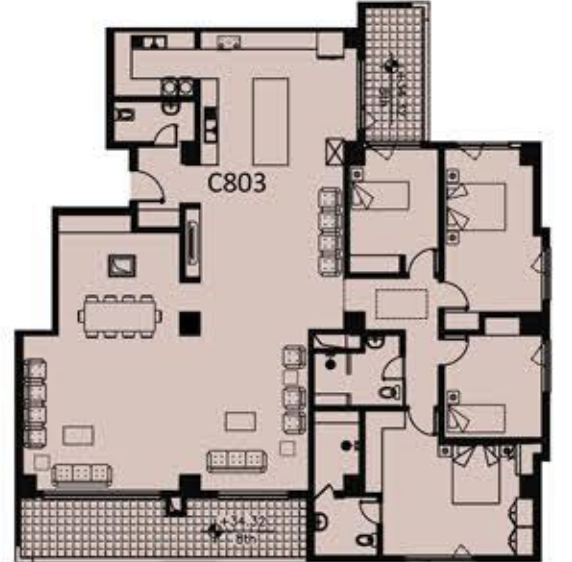


EIGHTH FLOOR

C801	110 m2
C802	185 m2
C803	295 m2
C804	155 m2
C805	165 m2
C806	220 m2



C805



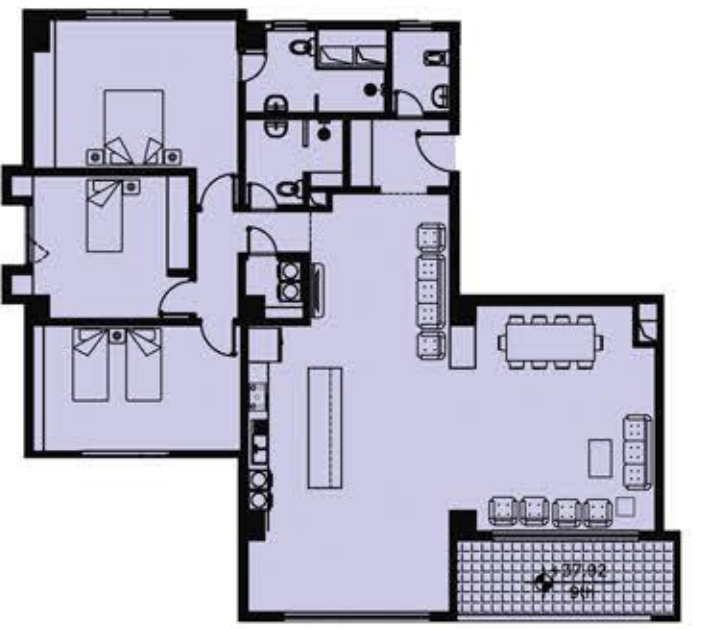
C803



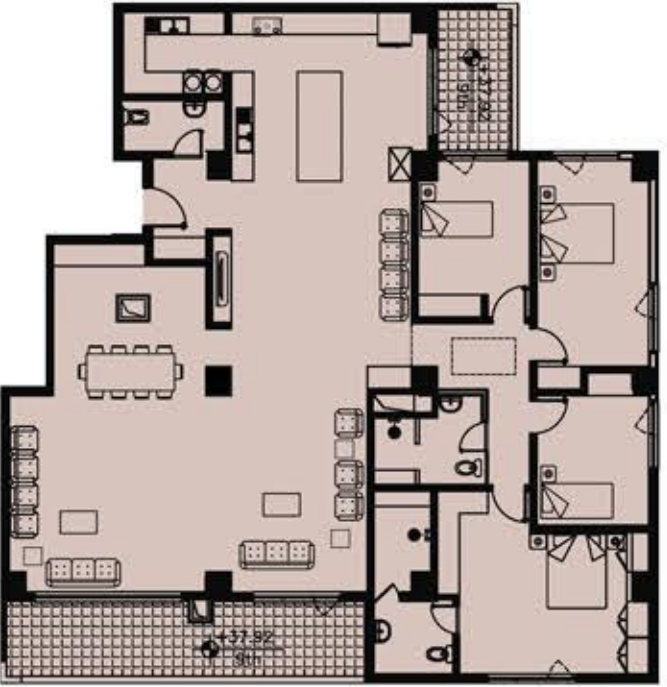


NINTH FLOOR

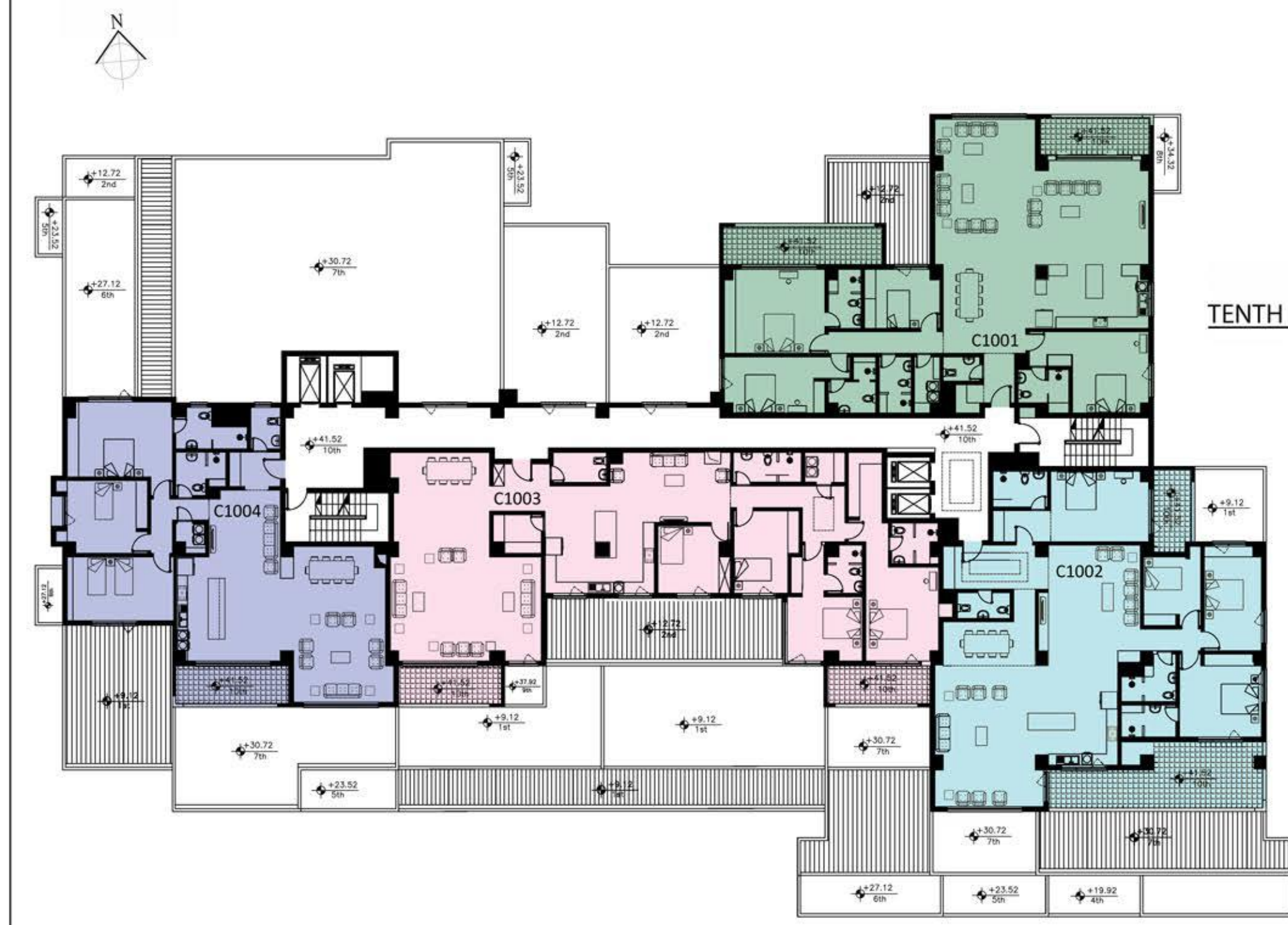
C901	115	m2
C902	190	m2
C903	290	m2
C904	155	m2
C905	170	m2
C906	220	m2



C906

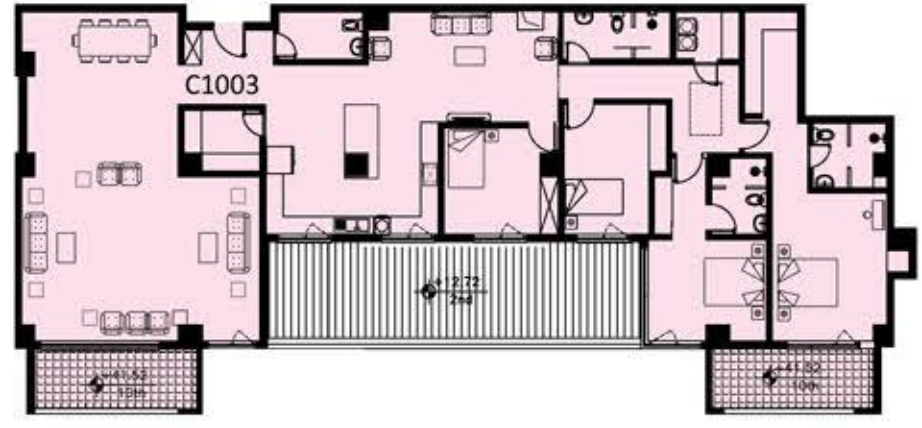
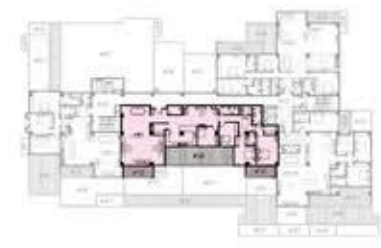


C903

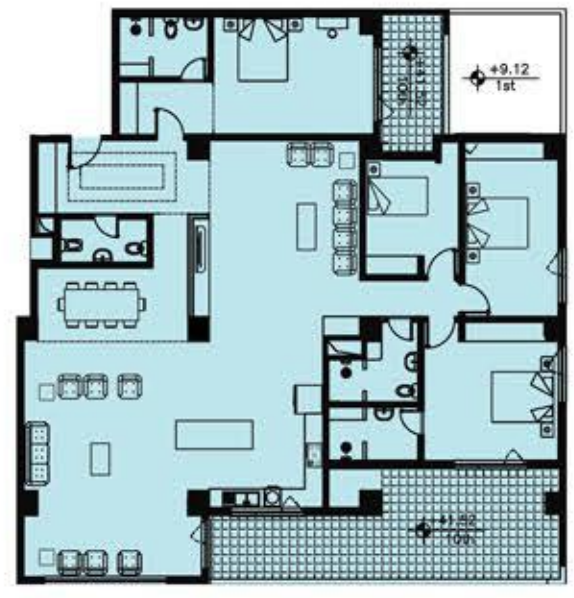


TENTH FLOOR

C1001	305	m2
C1002	285+15	m2
C1003	310	m2
C1004	220	m2



C1003



C1002

BEYOND RESIDENCE





ENJOY MOMENTS WORTH SHARING!

The team's focus is reflected in the design of high-performance units and common spaces in order to promote biological well-being in buildings and reduce environmental burden.





■ It is great to have a new perspective on things.

Life can have a different meaning

We blend art and science to create livable interior spaces, enhancing all the senses.





TERRACE HOUSES 



Inspiring, Innovative, Individual

We believe that quality design paired with sustainable architecture results in holistic solutions that meet our client's priorities and contribute to a livable and sustainable environment. Over the last number of years we have proven our strength in delivering outstanding architectural projects that combine creativity, scientific, knowledge, technical innovation, and sustainability.





A banquet hall is designed for various events hosting hundreds of people for different events and functions.

Here, we attempt to fulfill the desires of our clients, and also provide an atmosphere that helps to take their minds off the ordinary things.

BUILDING ON THE PAST, DESIGNING FOR THE FUTURE



DAY CAFE

The design focuses on the essentials of hospitality while creating a serene, calming environment for guests to relax and unwind.

LOOK NO FURTHER! WE GOT EVERYTHING FOR YOU



Medical Emergency Supervisor





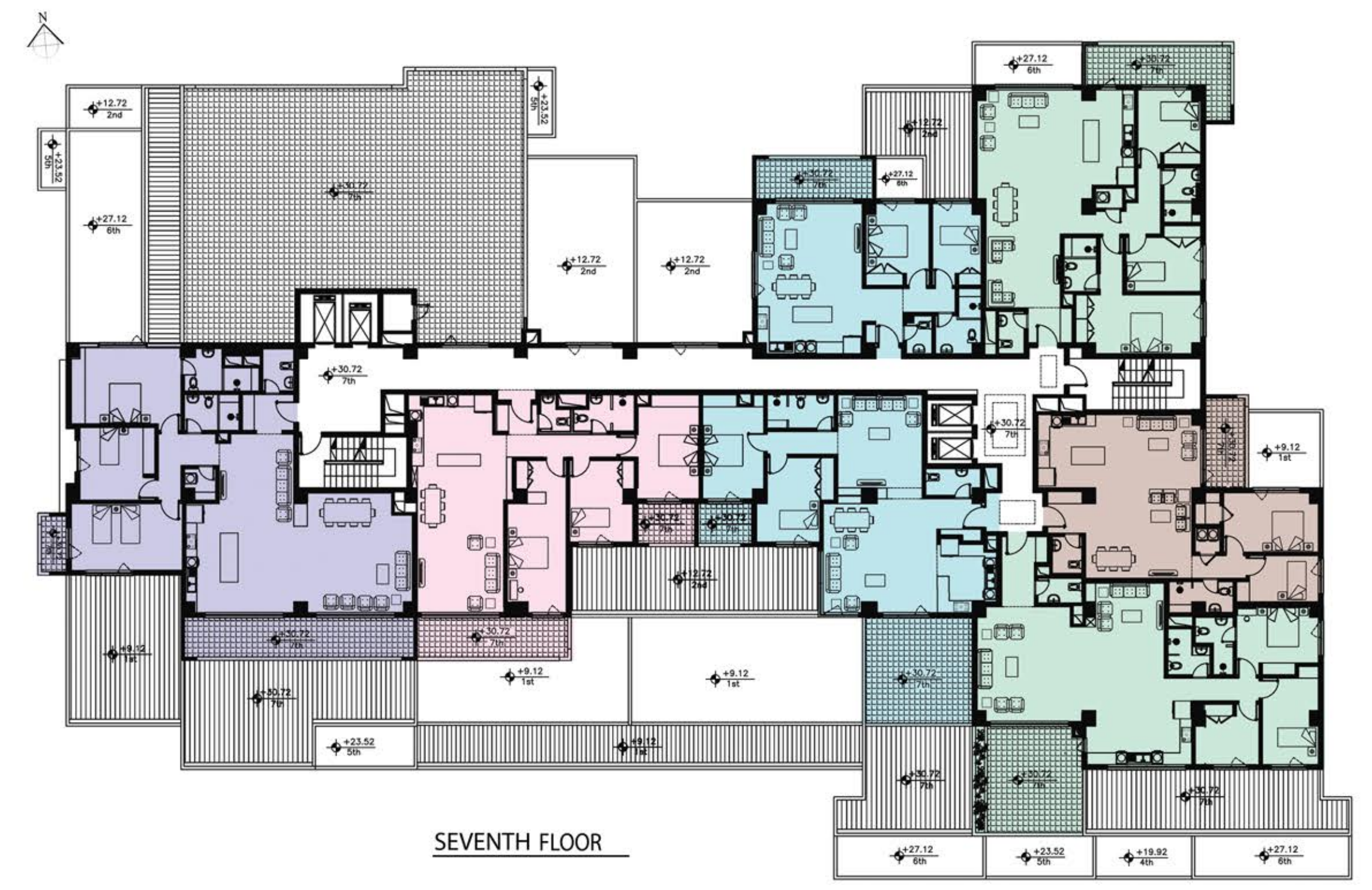
LIFE WILL PASS AS IT IS SUPPOSED TO

■ Landscaping and private gardens
reveal the uniqueness.

LIVING IN A HAPPY AND ENERGETIC ENVIRONMENT



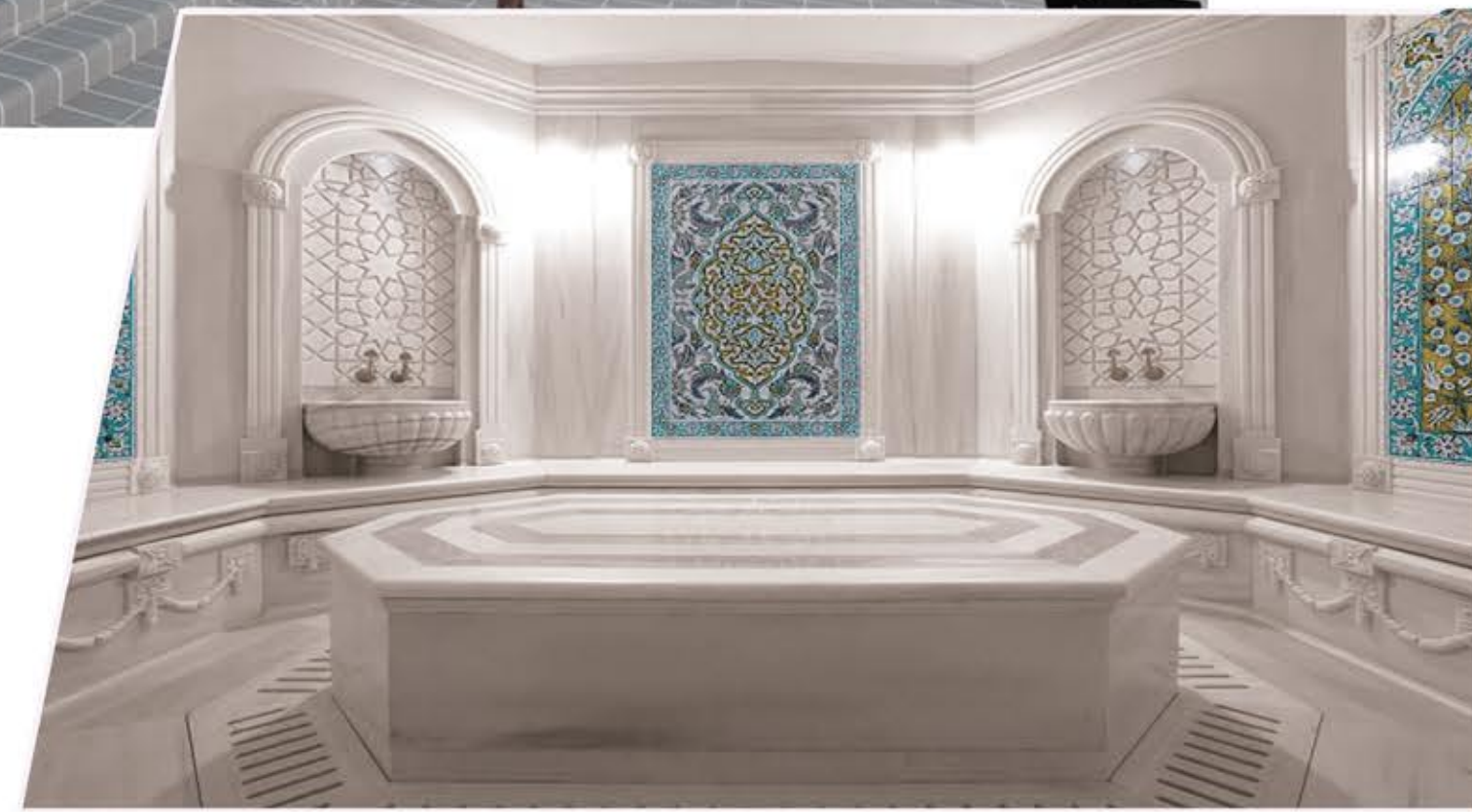
LOOK AT LIFE DIFFERENTLY



UNWIND AND ENJOY YOUR LIFE



TURKISH BATHROOM
SWIMMING POOL
GYM
AND....





We have acted on behalf of our clients to create a site, where they can do whatever they wish, as they spend a great time with their friends and family. Besides that, we strived to elevate their mood by providing several facilities for their enjoyment in every nook and corner of our site.



TEEDA